



# DSL Network Tuesday 11<sup>th</sup> February 2025





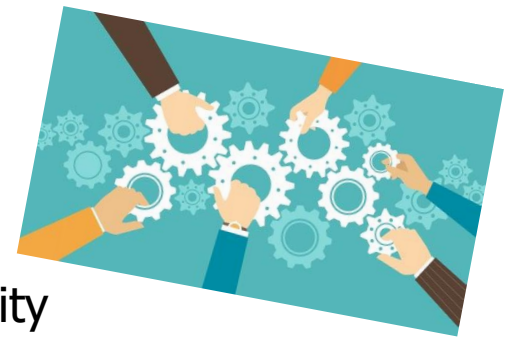
W E L C O M E

# DSL Network Aims and Purpose

- To promote connectivity with the Nottingham City Safeguarding Children Partnership, other key local authority departments and Designated Safeguarding Leads across the city
- Act as a conduit for policy updates
- A network which demonstrates professional behaviours and mutual support
- Sharing of pertinent local and national updates focusing on safeguarding priorities and emerging trends across the city of Nottingham

## Today's objective:

To raise awareness of the signs of child exploitation and routes of referral for Nottingham City education professionals.



# Network agenda

No		Agenda Items	Speaker
1	09:30-09:40	<b>Welcome and Outline</b>	John Matravers, Head of Safeguarding Children's Integrated Services-Nottingham City Council and Nicholas Lee, Director of Education Services
2	09:40-10:00	<b>National and Local Updates</b>	Ben Osifo, NCSCP Business Manager and Claire Maclean, School and Education Safeguarding Coordinator
5	10:00-10:15	<b>Local Authority referral routes</b>	Claire Wakeman, <u>Principle</u> Manager Children's Services
6	10:15-10:20	<b>BREAK</b>	
6	10:20-11:55	<b>Keynote speaker- Exploitation</b>	Sabrina Hewitt, Guest Speaker
6	11:55-12	<b>Close</b>	John Matravers, Head of Safeguarding Children's Integrated Services

\*Please note all Power Point material shared at the event will be uploaded onto the Nottingham Schools website after each network.



# TAKE CARE OF YOURSELF

# NCSCP Safeguarding Updates

## National Updates

**Ben Osifo**  
**Business Manager NCSCP**

[@NottinghamCSCP](#)

[Nottingham City Safeguarding Children Partnership - YouTube](#)



# NCSCP Updates

---



NOTTINGHAM CITY  
Safeguarding  
Children  
PARTNERSHIP

National Panel published report on Child Sexual Abuse: [“I wanted them all to notice”](#) - This report was commissioned by the Child Safeguarding Practice Review Panel (the Panel) to explore the challenges in identifying, assessing and responding to child sexual abuse within the family environment. It was published in Dec 2024.

[Child Safeguarding Practice Review Panel’s annual report 2023/24](#) - A summary of patterns in practice and key messages from serious incidents, rapid reviews, local child safeguarding practice reviews, national reviews, thematic analysis and reports in England. See also : [caspar-briefing-panels-annual-report-23-24.pdf](#)

[Online safety: Age Checks To Protect Children Online](#) - Ofcom has published a statement and guidance on age assurance and children's access assessments, outlining what online services must do under the Online Safety Act to help prevent children from encountering pornography and other harmful content.

[Survivors of sexual abuse to be empowered in closed case reviews - GOV.UK](#) - Survivors and victims will be able to ask for their closed cases to be reviewed by an independent criminal justice review panel where their previous investigations were not taken forward to prosecution by the police or Crown Prosecution Service (CPS).

[Health protection in children and young people settings, including education](#) - The UK Health Security Agency, has published a practical guide for staff on managing cases of infectious diseases in children and young people settings, including education.

New cross authority Conflict Resolution and Professional Disagreement Policy (Escalation Policy) – Coming Soon

[New Partnership Working Arrangements](#)

# Key Reviews



**The Competition and Markets Authority study into Children's Social Care Placements**

March 2022



**National Review into the murders of Arthur Labinjo-Hughes and Star Hobson**

May 2022



**Safeguarding Children with Complex Health Needs in residential Settings.**

April 2023



**The Independent Review of Children's Social Care**

May 2022



**The Report of the Independent Inquiry into Child Sexual Abuse**

October 2022

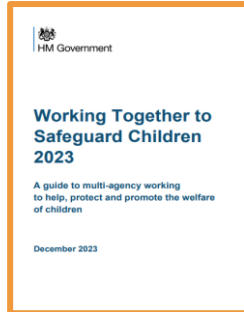


**National Review of child sexual abuse within the family environment**

November 2024

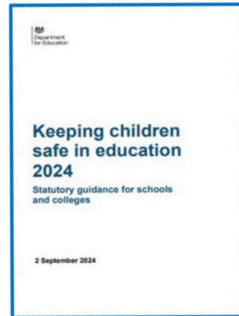


# Guidance, policy and legislation

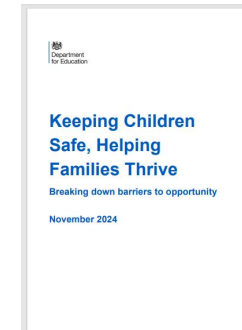


**Working Together to Safeguard Children**

Dec 2023

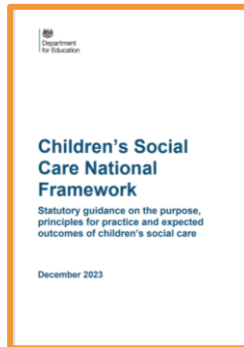


**Keeping children safe in education 2024**



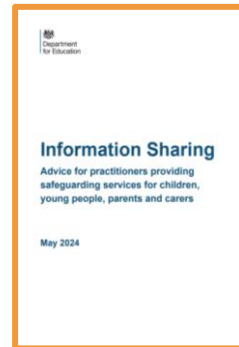
**Keeping Children Safe, Helping Families Thrive**

Nov 2024



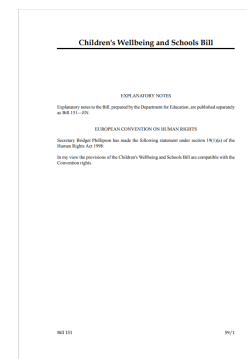
**Children's Social Care National Framework**

Dec 2023



**Information Sharing: Advice for practitioners**

May 2024



**Children's Wellbeing and Schools Bill**

Dec 2024



# Keeping Children Safe, Helping Families Thrive

*‘...the time is right to reset the children’s social care system. We are delivering a whole-system and child-centred approach to reform....all of our actions will be guided by 4 key reform principles:’* Bridget Phillipson (Secretary of State for Education)



## Keeping Children Safe, Helping Families Thrive

Breaking down barriers to opportunity

November 2024



**1. Wherever possible children should remain with their families and be safely prevented from entering care in the first place.**

**Further roll out reforms to family help and child protection, working in step with partners.** There is lots of learning to draw from, e.g. Supporting Families, Families First for Children Pathfinder programme, Strengthening families, protecting children (SFPC) programme, youth offending teams and other multiagency approaches

**2. Support children to live with kinship or foster carers rather than residential care** via the use of family-based decision making, rolling out kinship reforms and recruiting more foster carers.

**3. Fix the broken care market via a range of measures to improve competition, regulation and commissioning** as well as shining a light on the levels of profit being made.

**4. A focus on key enablers** including better data and information sharing, spreading evidence-based programmes and the workforce.

# Children's Wellbeing and Schools Bill



## Children's Wellbeing and Schools Bill

### EXPLANATORY NOTES

Explanatory notes to the Bill, prepared by the Department for Education, are published separately as Bill 151—EN.

### EUROPEAN CONVENTION ON HUMAN RIGHTS

Secretary Bridget Phillipson has made the following statement under section 19(1)(a) of the Human Rights Act 1998:

In my view the provisions of the Children's Wellbeing and Schools Bill are compatible with the Convention rights.

## Bill passage

### Bill started in the House of Commons

1st reading

2nd reading

**Committee stage**

Report stage

3rd reading

### Bill in the House of Lords

1st reading

2nd reading

Committee stage

Report stage

3rd reading

### Final stages

Consideration of amendments

Royal Assent

A Bill to make provision about the safeguarding and welfare of children; about support for children in care or leaving care; about regulation of care workers; about regulation of establishments and agencies under Part 2 of the Care Standards Act 2000; about employment of children; about breakfast club provision and school uniform; about attendance of children at school; about regulation of independent educational institutions; about inspections of schools and colleges; about teacher misconduct; about Academies and teachers at Academies; repealing section 128 of the Education Act 2002; about school places and admissions; about establishing new schools; and for connected purposes.

# Strengthening the role of education within multi-agency safeguarding arrangements



NOTTINGHAM CITY  
Safeguarding  
Children  
PARTNERSHIP

Plans are to ensure that

- all education settings , including schools, colleges, early years and childcare settings, and alternative provision, are named as relevant agencies by default so that they are automatically included in safeguarding arrangements in a local area;
- local safeguarding arrangements include representation from education as an agency at both operational and strategic decision-making levels.
- There will be an update to statutory guidance such as Working Together, to set expectations of safeguarding partners and education based on models known to be working in local areas that involve education effectively in their arrangements.

# Children's Wellbeing and Schools Bill – Some Highlights

---



- New duty for **schools and councils to co-operate on admissions**
- The **presumption that new schools must be academies will be ended**
- **All councils must have ‘children not in school’ registers**, with a duty to support parents on their registers.
- **Some parents will need council consent to home education their child.** LAs can also compel home educated children on protection orders to attend school.
- **New powers for Ofsted to enter suspected illegal schools** and “search” rather than just inspect.
- **New powers for Ofsted to enter suspected illegal schools** and “search” rather than just inspect.
- **State-funded schools to ensure all children on roll in reception to year 6 have access to a free, at least 30-minute-long breakfast club** before school.
- **Duty for safeguarding partners to set up multi-agency child protection teams.** Will include a person “with education experience”.
- **A single unique identifier to be introduced** for each child across multiple data sets, with a new duty to share information for welfare and safeguarding purposes.

# LEARNING REVIEW: Case Summary & Learning Points



Learning Reviews - Learning Reviews offer an opportunity to further explore cases that might identify practice and procedural issues across more than one agency that do not meet the threshold for a serious incident notification and Rapid Review.

Two siblings subject of a Child Protection Plan with concerns of high-risk domestic violence. The home environment also gave cause for concern due to a lack of protection and nurturing care from the parents. The children were living in an environment that posed a significant risk of physical and emotional harm and abuse. The female sibling was taken to hospital via the Emergency Department in September 2024 and was admitted to the High Dependency Unit of the PCCU (Paediatric Critical Care Unit). She had been brought to ED reportedly for constipation, but it was noted by staff that she appeared to be very unwell and having significant breathing problems. She was noted to have extensive bruises and the consultant for the critical care unit was concerned to the point of contacting social care and produced a written summary of concern. It also transpired that the male sibling had disclosed that the children are being physically harmed by both parents,

## Summary of concerns highlighted in the review:

- Domestic abuse and assault including when children were present (allegation and counter-allegation between adults)
- References to potential adult factors such as drug/alcohol, mental health, police contact
- High risk actions such as strangulation, threat to life, indication of weapons being present
- Report of intentional physical harm to both children (including direct from child)
- Failure to act to protect children and prioritise their needs
- Neglect (household, presentation, supervision, routines, poor quality diet)
- Lack of warmth, response, attachment or concern from adults
- Minimisation of harm or risk
- Understanding of cultural competency
- Addressing practice when a new concern is raised when a case is already open to social care.
- Disguised compliance by parents
- Childs Voice. Non verbal child.

## Next Steps:

Following the Learning Review the recommendations will be turned into an action plan and a learning briefing will be created and shared with the partnership.

## Learning from Audits: Exploitation (CCE & CSE)

Cross authority Exploitation audit 2024 looked at partnership responses to exploitation for ten children. These were selected from a cohort of children assessed as being at high-risk of criminal or sexual exploitation by social workers. All had been considered at a specialist multi-agency panel in July 2023.

### Areas of strength were identified as follows:

- **Child focussed work:** Good examples of the voice of the child being captured and utilised to inform the safeguarding response
- **Language:** Language used by professionals was noted to be, on the whole, strength-based, trauma informed and not victim blaming.
- **Strong multi-agency working:** There was evidence throughout all audited cases of strong partnership relationships, working effectively to problem solve.
- **Good communication:** communication between organisations was effective. This is a consequence of the strong network of relationships established between professionals dedicated to exploitation.



# Learning from Audits: Exploitation (CCE & CSE) ctd.

## Areas Of Learning identified

- **Professional curiosity:** Was found lacking in some cases.
- **Information Sharing:** There were multiple examples of failings to share information between organisations.
- **Quality of risk assessment:** Significant detail was missing from Risk Assessments
- **Language:** Language was not recognised as a significant issue. However, some victim blaming language was still found to exist.
- **Proactive approach:** Opportunities to proactively develop information/intelligence could be improved to better assess the risk and identify avenues for disruption.



NOTTINGHAM CITY  
Safeguarding  
Children  
PARTNERSHIP

# Learning from Audits: Strategy Discussions

This was the fourth audit undertaken in line with the cross-partnership auditing agreement. It was a retrospective, qualitative audit, the purpose being to understand the effectiveness of multi-agency working in response to situations requiring a strategy discussion. This features in both the Nottingham City Safeguarding Children Partnership (NCSCP) and the Nottinghamshire Safeguarding Children Partnership (NSCP) business plans.

## Areas of strength were identified as follows:

- **Good identification of risk and timely response:** The risk was identified, and a timely strategy discussion took place for 9 of the 10 children identified within the sample cases
- **Information Sharing:** Of the 44 audits returned 30 auditors felt able to grade the quality of information shared in the strategy discussion. Of those graded, 70% identified information shared in the meetings as either good or outstanding.





# Learning from Audits: Strategy Discussions ctd.

## Areas Of Learning identified

- **Communication across the partnership:** Challenges with communication across the partnership was a reoccurring theme throughout the audit sample.
- **Recording:** A particular challenge identified in the Nottingham City cohort was an inability to be able to account for whether minutes from strategy discussions had been shared.
- **Being more child/ young person centred:** The need to include children in their safety planning was a theme which was identified during the audit process
- **The need to ‘Think Family’:** The audit sample identified a need to improve performance in respect of the consideration of the family within strategy discussions. Three of the audits identified development opportunities in relation to the consideration and engagement of fathers.
- **The need to consider the role of the PIPOT (People In Position Of Trust):** Strategy discussion did not adequately consider that child’s father who was considered a risk worked with vulnerable adults and as such did not consider what action was required in relation to this.

# Local Updates

- Operation Encompass briefings- save the date
- Social care contacts
- Ofsted consultation
- Key websites
- Strategy discussion- half term availability
- Local Safeguarding Partnership Audit
- Community safety

# Operation Encompass



Dear Headteacher and DSL

Some of you may be aware that on 24<sup>th</sup> May 2024 Royal Assent was granted to The Victims and Prisoners Act. The new Act placed Operation Encompass into law and puts a statutory obligation on police forces to share Operation Encompass notification with schools. See link for further information and useful resources- [www.operationencompass.org](http://www.operationencompass.org)

It is due to this statutory change that there have been some amendments to the way in which Nottinghamshire Police adheres to the Op Encompass policy. The policy suggests that the police are to take sole responsibility for sending the Operation Encompass notifications to education and health whereas at present the Local Authority lead on the administrative functions connected to this safeguarding process. Planned changes in terms of the information that you receive as a school and how such information will be communicated will be coming into effect on Monday 31<sup>st</sup> March 2025.

In order to ensure a structured and informative transition takes place, we would like to request that you save the date and attend one of the planned briefing taking place on **Tuesday 4<sup>th</sup> March** or **Thursday 6<sup>th</sup> March**. Both sessions will take place from 4-5pm and are duplicate sessions so **you do not need to attend both** only one. You do not need to book in advance simply use the joining link below of the session you wish to attend.

[Operation Encompass briefing - Tuesday 04th March 2025 4-5pm](#)

[Operation Encompass briefing- Thursday 06th March 2025 4-5pm](#)

The session aims to ensure that everyone is updated as to what changes are being brought about as of 1<sup>st</sup> April 2025. The information you will receive post 1<sup>st</sup> April 2025 will be slightly different, along with who you receive the information from. This session will cover what will be shared, why this is and what expectations we have from you going forward with the information you will receive.

\*Given the sheer volume that will be attending, this session will be delivered by the police. With inputs from Moira Loadman, Claire Maclean and Sam Danyluk, with no opportunity for a Q & A. We are however confident that the information we will be sharing will answer any potential questions that you may wish to have asked.

# Social care contacts

## Fieldwork and Children in Care Team Managers & Team Areas / Contacts

South Teams	Team Area	Team Name	Contact No.	E-Mail Address
<b>Service Manager</b>				
Tracy Hayden				<a href="mailto:Tracy.hayden@nottinghamcity.gov.uk">Tracy.hayden@nottinghamcity.gov.uk</a>
<b>Team Managers</b>				
Ian Jodrell	S02	St Anns	Team 0115 87 65645	<a href="mailto:South.fieldwork@nottinghamcity.gov.uk">South.fieldwork@nottinghamcity.gov.uk</a>
Nicky Lee	S03	Mapperley / Dales	Team 0115 87 65645	<a href="mailto:South.fieldwork@nottinghamcity.gov.uk">South.fieldwork@nottinghamcity.gov.uk</a>
Carol Glaister	S04	Clifton	07951 652 820 (Team) 0115 8786310	<a href="mailto:South.fieldwork@nottinghamcity.gov.uk">South.fieldwork@nottinghamcity.gov.uk</a>
<b>North Teams</b>				
<b>Service Manager</b>				
Caroline Vallyelly			0115 8761837	<a href="mailto:Caroline.vallyelly@nottinghamcity.gov.uk">Caroline.vallyelly@nottinghamcity.gov.uk</a>
<b>Team Managers</b>				
Leigh Lynk	N01	Bulwell	Team 0115 87 61902	<a href="mailto:North.fieldwork@nottinghamcity.gov.uk">North.fieldwork@nottinghamcity.gov.uk</a>
Laura Cresci	N02	Bulwell Forest / Bestwood	Team 0115 87 61902	<a href="mailto:North.fieldwork@nottinghamcity.gov.uk">North.fieldwork@nottinghamcity.gov.uk</a>
Lisa Statham	N03	Basford / Berridge /	Team 0115 87 61902	<a href="mailto:North.fieldwork@nottinghamcity.gov.uk">North.fieldwork@nottinghamcity.gov.uk</a>
Tom Beesley	N04	Sherwood	Team 0115 87 61902	<a href="mailto:North.fieldwork@nottinghamcity.gov.uk">North.fieldwork@nottinghamcity.gov.uk</a>
<b>Central Teams</b>				
<b>Service Manager</b>				
John Carter			0115 8761006 or	<a href="mailto:John.Carter@nottinghamcity.gov.uk">John.Carter@nottinghamcity.gov.uk</a>
<b>Team Managers</b>				
Jodie Stephanou	C01	Bilborough	Team 0115 87 61865	<a href="mailto:Central.fieldwork@nottinghamcity.gov.uk">Central.fieldwork@nottinghamcity.gov.uk</a>
Julie French	C02	Aspley / Leen Valley	Team 0115 87 64097	<a href="mailto:Central.fieldwork@nottinghamcity.gov.uk">Central.fieldwork@nottinghamcity.gov.uk</a>
Kate Tolentino	C03		Team 0115 87 64098	<a href="mailto:Central.fieldwork@nottinghamcity.gov.uk">Central.fieldwork@nottinghamcity.gov.uk</a>
Michelle Frost	C04	Radford / Arboretum / Park	Team 0115 87 61865	<a href="mailto:Central.fieldwork@nottinghamcity.gov.uk">Central.fieldwork@nottinghamcity.gov.uk</a>
<b>Head of Service</b>	<b>Nicole Harris</b>		<b><a href="mailto:Nicole.harris@nottinghamcity.gov.uk">Nicole.harris@nottinghamcity.gov.uk</a></b>	

Children in Care Service Manager	Team Area	Contact No.	E-Mail Address
Treza Mann		0115 87 64528	Treza.mann@nottinghamcity.gov.uk
<b>Team Managers</b>		CIC Duty Team 0115 8762801	<a href="mailto:cicbst@nottinghamcity.gov.uk">cicbst@nottinghamcity.gov.uk</a>
Saira Shahid	Children in Care Team 1		
Sally Charlton	Children in Care Team 2		
Nisha Sandhu	Children in Care Team 3		
Jessica Andrew	Children in Care Team 4		
<b>Head of Service</b>	William Hose - William.hose@nottinghamcity.gov.uk		

First Response			
Service Manager - Duty	Richard McRea	0115 8765600	Richard.mcrea@nottinghamcity.gov.uk
Service Manager – MASH/EDT	Diana Millwood		Diana.millwood@nottinghamcity.gov.uk
Duty Teams	Team	Contact No.	E-Mail Address
Jennifer Smith	Team 1	0115 8765600	<a href="mailto:Duty.Screening@nottinghamcity.gov.uk">Duty.Screening@nottinghamcity.gov.uk</a>
Rachel Knight	Team 2		
Alivia Francis	Team 3		
Samuel Vallee	Team 4		
MASH	Team	Contact No.	E-Mail Address
Suzanne Eastwood	MASH	0115 8765600	CityMash@nottinghamcity.gov.uk
Gillian Till			
Maneesh Lehal			
<b>Head of Service</b>	Samantha.danyluk@nottinghamcity.gov.uk		

# Ofsted report card proposals

## Improving the way Ofsted inspects education

On the 3<sup>rd</sup> February 2025, Ofsted released its consultation on the New Inspection Framework which will affect schools and other settings where children and adults learn - including Early Years.

Ofsted are asking parents, carers, professionals, and learners what they think about the proposed plans to improve Education Inspections including new report cards.

You can find the consultation here: [Improving the way Ofsted inspects education - GOV.UK](#)

The consultation closes on 28<sup>th</sup> April at 11.58.

We would encourage you to share this information with parents and carers and complete the consultation to share your thoughts about the proposals.

# Local Safeguarding Partnership Audit

This academic year's online audit will open at the start of the summer term. An email will be sent to all Headteachers and the DSL along with a '**support and guidance**' document that should answer any questions to help with completion of the audit and understanding the wider process.

**The annual audit will open online on Tuesday 22<sup>nd</sup> April 2025**  
**The deadline for completion is Monday 14<sup>th</sup> July 2025**

We have attempted to ensure that the audit is as accessible as possible to reduce the time and resources required to complete your submission, this is through feedback from professionals completing it last year, updates to KCSIE 2024 and a working group of educational representatives from the Education Subgroup.

We recommend that Keeping Children Safe in Education 2024 (KCSIE 2024) is at hand whilst completing the audit.

# Website update

There are two main websites held by the local authority that will be key to supporting the role of the DSL-

1- Nottingham City Safeguarding Children Partnership-  
[www.nottinghamcity.gov.uk/ncscp](http://www.nottinghamcity.gov.uk/ncscp)

2- Nottingham Schools- [www.nottinghamschools.org.uk](http://www.nottinghamschools.org.uk)

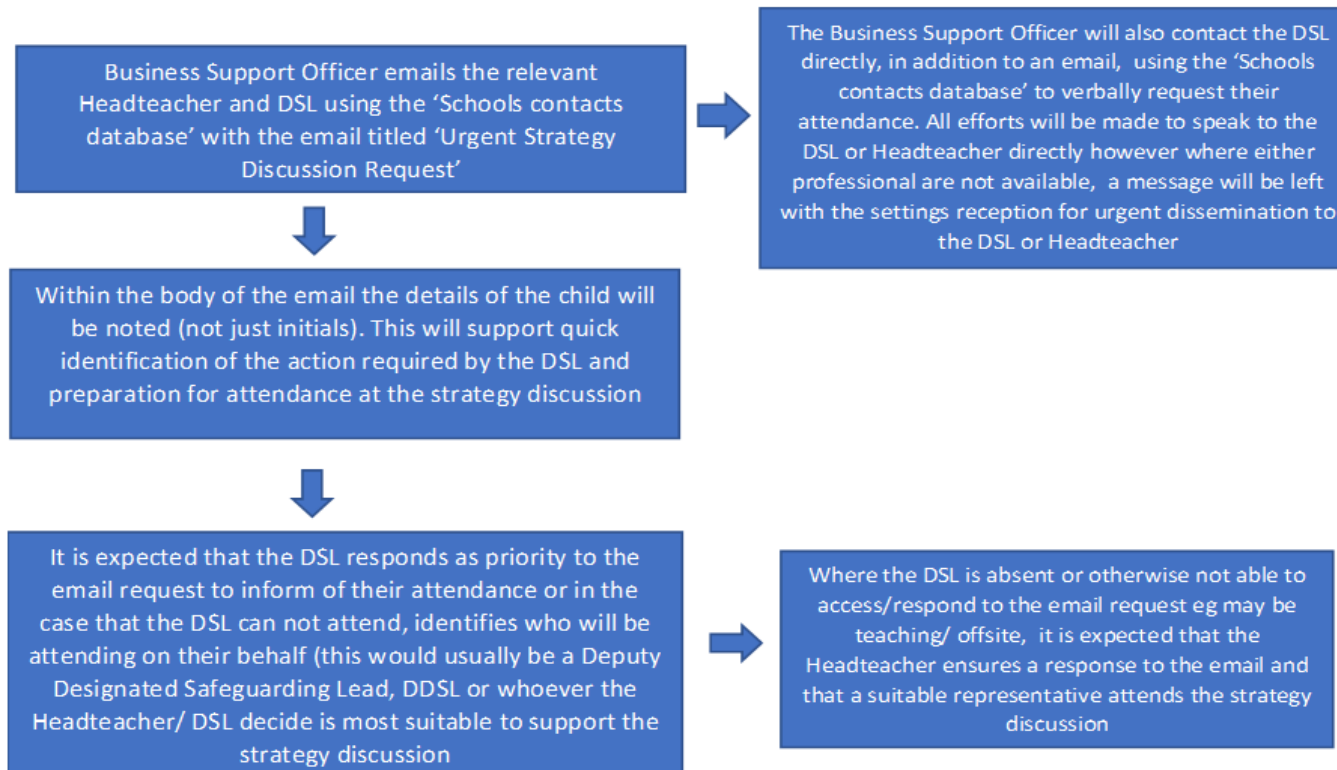


# Strategy discussions

## Education Invitations

Schools and educational settings that support children daily often have vital information that will inform the strategy discussion process and decision making by the team of multiagency professionals in attendance, therefore educational professionals' attendance is essential at strategy discussions. In order to ensure that the strategy discussion assesses and addresses risks to ensure that the child is safeguarded appropriately, the named Designated Safeguarding Lead (DSL) from the relevant setting in which the child attends will be invited to attend the strategy discussion.

The process for inviting an identified DSL to a strategy discussion is as follows:



- ✓ Ensure that your 'front of house' understand the purpose of the call
- ✓ Ensure email response to City MASH as priority to identify who will be attend from your setting for the purposes of teams invite and recording
- ✓ Please make Claire Maclean aware where contact details for the DSL differ to those on our central database **during half terms**
- ✓ Ensure that there is coverage within safeguarding teams over school breaks or communicate accordingly with Claire Maclean where this request can not be fulfilled

# Improving multi agency working...what next?

- ✓ Claire Maclean and Jo Rowlett to attend quarterly meeting with social care and key partners to discuss attendance at strategy meetings and feed back any key messages
- ✓ DSL contact list for each school has been shared with social care to ease communication
- ✓ Social care team managers to highlight the importance of inviting schools to strategy discussions and ask social workers to **call** schools as well as email (including school holidays)
- ✓ Schools to inform Claire Maclean if there is a change of DSL across the year to ensure that the contact list is up to date. Where the DSL contact during holidays will differ from that on the LA's central database please ensure to share with Claire Maclean
- ✓ Schools to prioritise strategy discussion attendance and ensure that there is adequate capacity within the DSL team

***Whenever there is reasonable cause to suspect that a child is suffering or is likely to suffer significant harm, a strategy discussion is held, often at short notice, to determine the child's welfare and plan rapid future action.***

***Attendees:*** A local authority social worker, health practitioner and a police representative should, as a minimum, be involved in the strategy discussion. Other relevant practitioners will depend on the nature of the individual case but may include the referring agency, those who have concerns about the child and/or those involved in the child's life. (Working Together, 2023).

*In Nottingham City, it is recognised that schools play a pivotal role in children's daily lives, can contribute valuable key information, and respond to identified needs. Therefore, there is a local priority to include representation from the child's education provision in the strategy discussion.*

# Community Protection guidance

## Community protection

We occasionally see and hear of safeguarding and road safety incidents near some of our schools. More specifically incidents where strange vans hover and unknown adults behave badly including what appears to be trying to tempt children into cars etc. These are clearly a significant concern to your school especially if they are arising on the way to and from school. In terms of sharing information we would hope you can follow these steps in the rare event this happens.

- 1) Please try and get as much information about the incident and report directly to the police. Please do not rely on any rumours, we have seen sometimes parents posting something on Facebook which becomes embellished and has little or no evidence. However please let the police know of your concerns. (Call 999 or 101 or call your community officer)
- 2) Please also let NCC know about the incident, email into [CP.BDU@nottinghamcity.gov.uk](mailto:CP.BDU@nottinghamcity.gov.uk) and copy in Claire Maclean, School and Education Safeguarding Coordinator

NCC will ensure that Community Protection, Education and Children's services are aware of the incident and they will discuss your case with the police to get best advice and actions in place. That discussion will look at how to improve protection and manage the situation, maybe increase patrols etc. They may contact you directly. Education will then let you know anything further that you might need to know or actions for your school to take. They will also send out any wider information to help inform heads in nearby local schools and what needs to be communicated to the parents and carers. This might be for example

- a. A letter to send out to families in all schools in the City from the Police
- b. A letter to send out to families in the local area via schools ( from the police or NCC)
- c. Information about incidents for Senior staff to know about but suggesting no further dissemination
- d. Simply no further action

It is often difficult to balance reassurances and the necessary alarm, but this way we hope to tread that path sensibly and give you confidence in the action and information you pass on to families and ensure proper protection of children, young people and their families in the City.



# How to report concerns of Child Exploitation in Nottingham City



**2 in 5** do not have access to a car



**17%** have a long-term activity-limiting illness or disability

**Young population 50% aged under 30**



Census 2021

**323,700** live in the City

ONS 2018-20

**FRED Aged 77**

**EDNA Aged 81**

Life expectancy lower than the England average  
(Males 77 compared to 79 England)  
(Females 81 compared to 83 England)



**Households 145,800**

Residential Properties (LLPG) 2021

## Languages spoken in the City

English 68.7% Urdu 5.7% Polish 4.2% Punjabi 2.6% Arabic 2.4% Romanian 1.3%



**7.8%** of households have no members who speak English as a main language

School Census Jan 2021

**226,400** working age population (16-64)

**1 in 4**

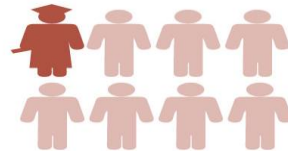


adults are physically inactive

Sport England 2019/20



Highest level of bus use per head outside London



**1 in 8** are students

ONS 2020

**Births 3,666** **Deaths 2,609**

**Nottingham ranks 11th** most deprived district in the country

(\*8th out of 317 Districts)

Indices of Deprivation 2019

# The Exploitation Pathway

There are two toolkits available to professionals who are wanting to evidence the risk of exploitation to children. Currently Nottingham City has a CCE toolkit and a CSE toolkit. Soon we will be looking at launching one exploitation Risk Assessment that covers all forms of Exploitation.

The exploitation toolkits can be found on the Nottingham City Website under safeguarding.

[Exploitation - Nottingham City Council](#)

# How to make a referral

In all cases where there are concerns of Exploitation involving Children a MARF needs to be completed and submitted to CITY MASH. Any of the toolkits can be submitted alongside the MARF referral, however the toolkits will not be accepted without a MARF having been completed.

If the Child already has an allocated Social Worker then a toolkit can be completed and sent directly to the allocated Social Worker.

If you are concerned that a MARF you have submitted to CITY MASH has not received the right services then you would need to follow the escalation process where your concerns will be looked at and the information you have submitted will be reviewed.

# Types of meetings held where exploitation is identified

**EXPLOITATION RISK MANAGEMENT MEETINGS**- These are chaired by a Child Protection Chair (CPC). There will be attendance from Social Care, YJS, Police, Education, Placements and any other professionals who work with the child/family. A safety plan will be devised and a risk rating of either LOW, MEDUIM or HIGH will be given in that meeting. There will then be a date set to review the safety plan.

**MASE**- Children who have been rated as High risk of CSE will be heard at this panel, representants from Police, Health, Education, Social Care, CAMHS & YJS attend to look at what further support can be offered to the child and look at ways to disrupt the exploitation.

**NSD**- Children who have been rated as High risk of CCE will be heard at this panel, representants from Police, Health, Education, Social Care, CAMHS & YJS attend to look at what further support can be offered to the child and look at ways to disrupt the exploitation.





**BREAK**

# Child Criminal Exploitation

County Lines

SABRINA HEWITT



# Who am I ?

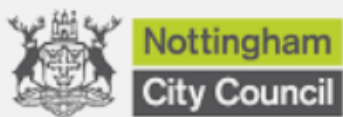
- ▶ Sabrina Hewitt
- ▶ Criminally exploited from the age of 8
- ▶ Father in and out of prison, was abusive & controlling
- ▶ Mother emotionally unavailable
- ▶ In and out of care growing up
- ▶ Involved in criminality
- ▶ Teenage mother
- ▶ Ex- Offender



# Nottingham

## 1. Population & Youth

- 65,972 children under 18
- 28,908 aged 10-17
- High student population (1 in 7 residents)



## 2. Key Risk Indicators

- 11th most deprived district in England
- 40% children in poverty (24,000)
- Child homelessness rate nearly double national average
- High safeguarding rates:
  - Children in care: 109 per 10,000 (national: 70)
  - Child protection plans: 80 per 10,000 (national: 43)

### 3. Additional Vulnerabilities

- 26.1% pupils have English as second language
- High population turnover (20.4% annual change)
- 29,000 children seeking mental health support
- 6.5% unemployment (national: 4.4%)

# Child Criminal Exploitation (CCE)

WHAT IS IT?

# Child Criminal Exploitation is...

- Child criminal exploitation is the manipulation, coercion and control of children and young people to commit crimes usually for the benefit of other abusive adult's or peers.
- **CCE is child abuse**





# Examples of Criminal Exploitation

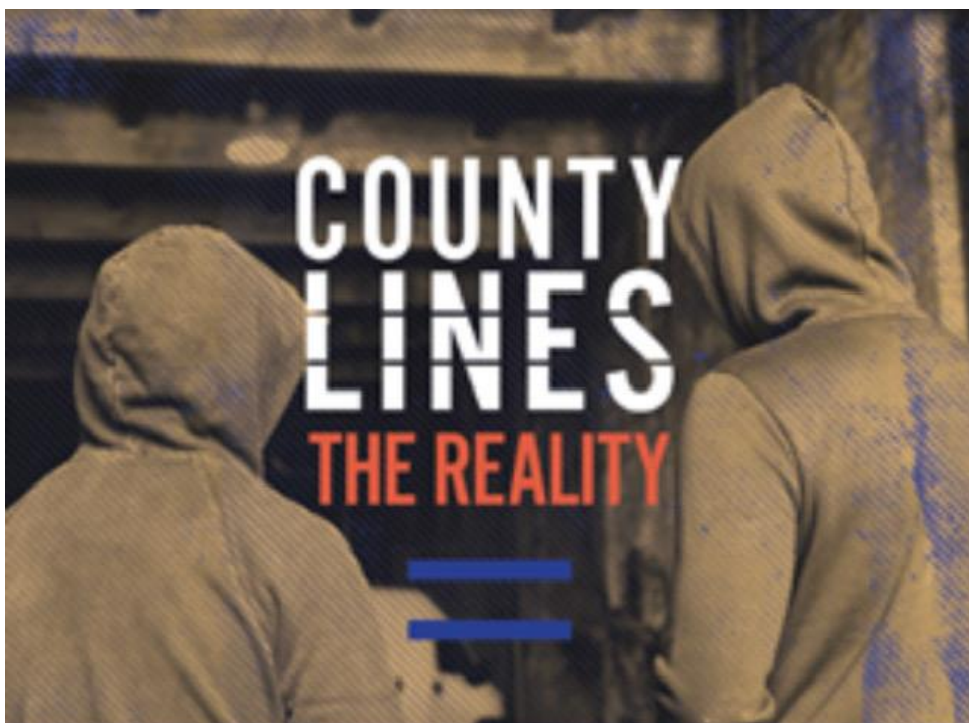
- ▶ Children forced to work on cannabis farms
- ▶ Children forced to commit theft, shoplift or pickpocket
- ▶ Children forced to threaten or harm other young people
- ▶ Modern day slavery & trafficking
- ▶ Forced labour
- ▶ **County lines**



# County Lines



# What is County Lines ?



County lines is the name given to drug dealing where organised criminal groups (OCGs) use phone lines to move and supply drugs, usually from cities into smaller towns and rural areas.

# What are the signs to look out for ?

- Frequently absent from and doing badly in school.
- Going missing from home, staying out late and travelling for unexplained reasons.
- In a relationship or hanging out with someone older than them.
- Being angry, aggressive or violent.
- Being isolated or withdrawn.
- Having unexplained money and buying new things.
- Wearing clothes or accessories in gang colours or getting tattoos.
- Using new slang words.
- Spending more time on social media and being secretive about time online.
- Making more calls or sending more texts, possibly on a new phone or phones.
- Self-harming and feeling emotionally unwell.
- Taking drugs and abusing alcohol.
- Committing petty crimes like shoplifting or vandalism.
- Unexplained injuries and refusing to seek medical help.
- Carrying weapons.

# The grooming line



## Targeting stage

- Observing the child/ young person
- Selection of child/ young person
- Befriending – being nice, giving gifts, caring, taking an interest, giving compliments, etc
- Gaining and developing trust
- Sharing information about young people between other abusive adults



## Friendship forming stage

- Making young people feel special
- Giving gifts and rewards
- Spending time together
- Listening and remembering
- Keeping secrets
- Being there for them
- 'No-one understands you like I do'; being their best friend
- Testing out physical contact – accidental touching
- Offering protection



## Loving relationship stage

- Being their boyfriend/girlfriend
- Establishing a sexual relationship
- Lowering their inhibitions – eg showing them pornography
- Engaging them in forbidden activities – eg going to clubs, drinking, taking drugs
- Being inconsistent – building up hope and then punishing them



## Abusive relationship stage

- Becomes an 'unloving' sexual relationship
- Withdrawal of love and friendship
- Reinforcing dependency on them – stating young person is 'damaged goods'
- Isolation from family and friends
- Trickery and manipulation – 'you owe me'
- Threatening behaviour
- Physical violence
- Sexual assaults
- Making them have sex with other people
- Giving them drugs
- Playing on the young person's feeling of guilt, shame and fear



Nottingham  
City Council



SABRINA  
HEWITT  
CONSULTANTS

# What can we do?

- Creating safe spaces
- Building trust
- Reporting procedures
- Support pathways

# Sabrina's Story



Nottingham  
City Council



SABRINA  
HEWITT  
CONSULTANCY  
TRAINING

Any questions?



Thank you!





Contact Info:

**Linkedin:** Sabrina Hewitt

**Email:** [info@sabrinahewitt.com](mailto:info@sabrinahewitt.com)

**Website:** [www.sabrinahewitt.com](http://www.sabrinahewitt.com)



# DSL network dates 2024-2025

## **Tuesday 20th May 2025 9.30-12pm virtual**

- ✓ Must book online in advance- Nottingham Schools website
- ✓ Expectation is that you take back learning, updates and any requests back to the wider team in your setting
- ✓ Attendance at two or more networks constitutes DSL Update training (certificates issued in summer term)

# Feedback



We'd really appreciate your feedback from today in response to the content covered alongside any other thoughts on topics you may like to see included at future network events- thank you!