

Year 10 Knife Crime Lesson



Slides designed in collaboration with students at West Notts College

Before we begin...

Knife crime may have affected you or people you know.

If you (or someone you know) feel worried or anxious during or after the session or at any time, please let someone know.

You can report Knife Crime anonymously through Crimestoppers' "Fearless" youth service on 0800 555 111 or www.crimestoppers-uk.org/fearless






Intended outcomes

By the end of the lesson, you will:

- know some statistics around knife crime
- understand laws and procedures around stop and search
- know the impact of knife crime on individuals and society
- understand the risks involved with carrying and using a knife
- know how to get help if you are concerned about knife crime

Group agreement

- Share your ideas thoughtfully
- Listen carefully
- Ask questions but not personal ones
- Be kind and respectful to each other
- Keep yourself and others safe



**What are the laws
around knives and
offensive weapons?**

UK Laws

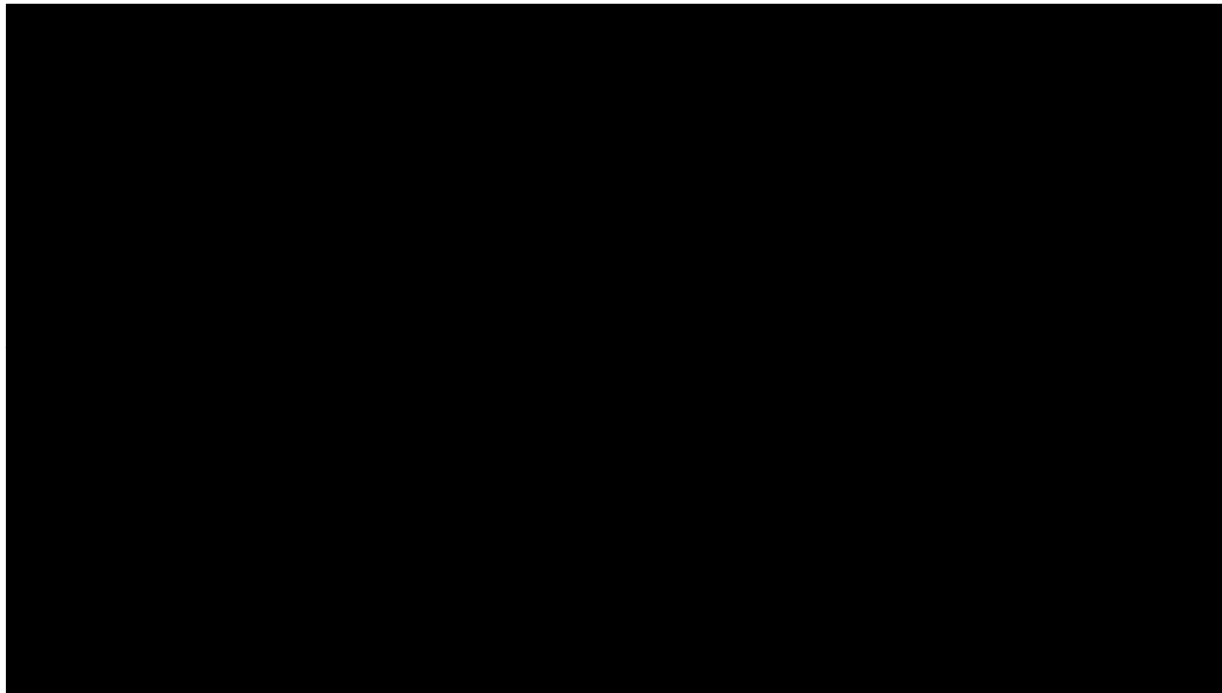
It is against the law to:

- Sell a knife to anyone under 18
- Carry a knife in public without good reason (unless a folding pocket knife with a blade 3 inches long or less)
- Use any knife in a threatening way
- Injure or fatally wound someone with a knife

Carrying a knife in a public place can carry a sentence of up to 4 years in England.

Some offensive weapons are illegal to manufacture, sell, hire, lend or give. These include zombie knives, knuckle dusters and telescopic truncheons.

Stop and Search



Please send any feedback regarding this animation to kelese@leaders-unlocked.org

Statistics

The Home Office definition of weapon enabled knife crime includes domestic crimes and comprises the following: Homicide; Attempted murder; Threats to kill; Assault with injury; Assault with intent to cause serious harm; Robbery; Rape; and Sexual assault.

- Nationally, how many knife crimes were recorded by the police in the year ending March 2023? **50,489**
- How many knife crimes were there in Nottinghamshire in the year ending March 2023? **811**
- Nationally, how many offences of “possession of article with blade or point” were there in the year ending March 2023? **28,013**
- What is the number of hospital admissions for assault by a sharp object in England and Wales in the year ending March 2023? **3,780**

Scenario

Josh, 16, is going out with Mikhail's ex-girlfriend, Chloe.

Josh and Mikhail were mates until a few days ago Mikhail posted a threat to Josh on Snapchat. Josh retaliates by threatening Mikhail.

Chloe knows what Mikhail is like and is worried Josh will get hurt.

She decides to take a knife with her.

Discuss

Chloe carries a knife in her pocket to protect Josh from Mikhail.

Is this legal?

What are the risks?

Chloe's ex Mikhail has threatened to beat Josh up.

What else could Chloe and Josh do in this situation?

Scenario

Later, at the park, Mikhail turns up with some mates.

They walk towards Josh. Worried about what will happen, Chloe takes out the knife and gives it to Josh.

Josh is surprised but points the knife at Mikhail to warn him off.

Discuss

- How do you think Mikhail and his friends will react to the knife?
- What are the risks?
- What do you think will happen?

Scenario

Mikhail moves to grab Josh's hand.

Josh panics and jerks the knife towards Mikhail and stabs him.

Mikhail falls to the floor.

Josh and Chloe run.

Discuss

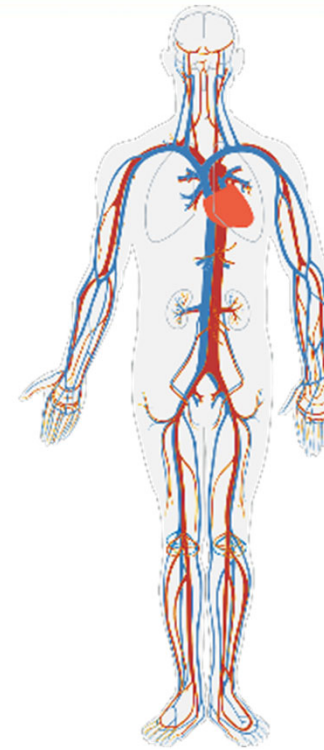
- What do you think Mikhail's friends will do?
- What should they do?
- What are the possible consequences of this situation?


What should happen next?

- Mikhail's friends act quickly.
- One applies pressure around the wound and tells Mikhail that help is on the way.
- One calls 999.
- No-one attempts to remove the knife.

Is there a safe place to stab someone?

There is no such thing as a safe place to stab someone, all stab wounds could lead to life-threatening injury or death.

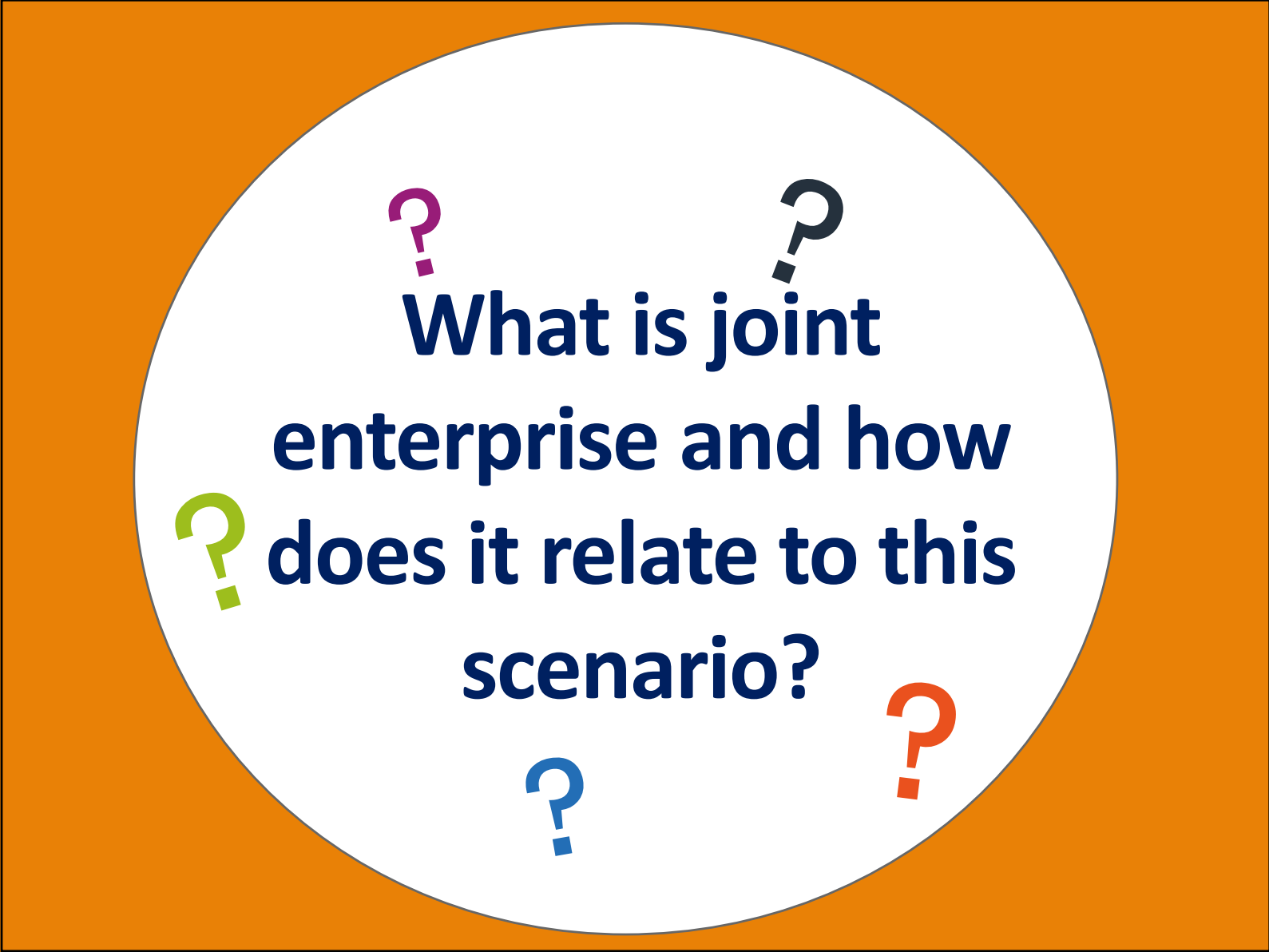




**The impact of knife
crime – who and
what?**

The impact of knife crime

- People in the park
- Teachers
- Pupils at school
- Nurses
- Doctors
- Education
- Career prospects
- Travel
- Death
- Reputation
- Relationships
- Trust
- Mikhail
- Mikhail's family
- Mikhail's friends
- Josh
- Josh's family
- Josh's friends
- Chloe
- Chloe's family
- Chloe's friends
- Paramedics
- Police officers
- Freedom
- Physical health
- Mental health
- Disability
- Criminal record
- Increased fear
- Revenge attacks
- More people carrying knives



**What is joint
enterprise and how
does it relate to this
scenario?**

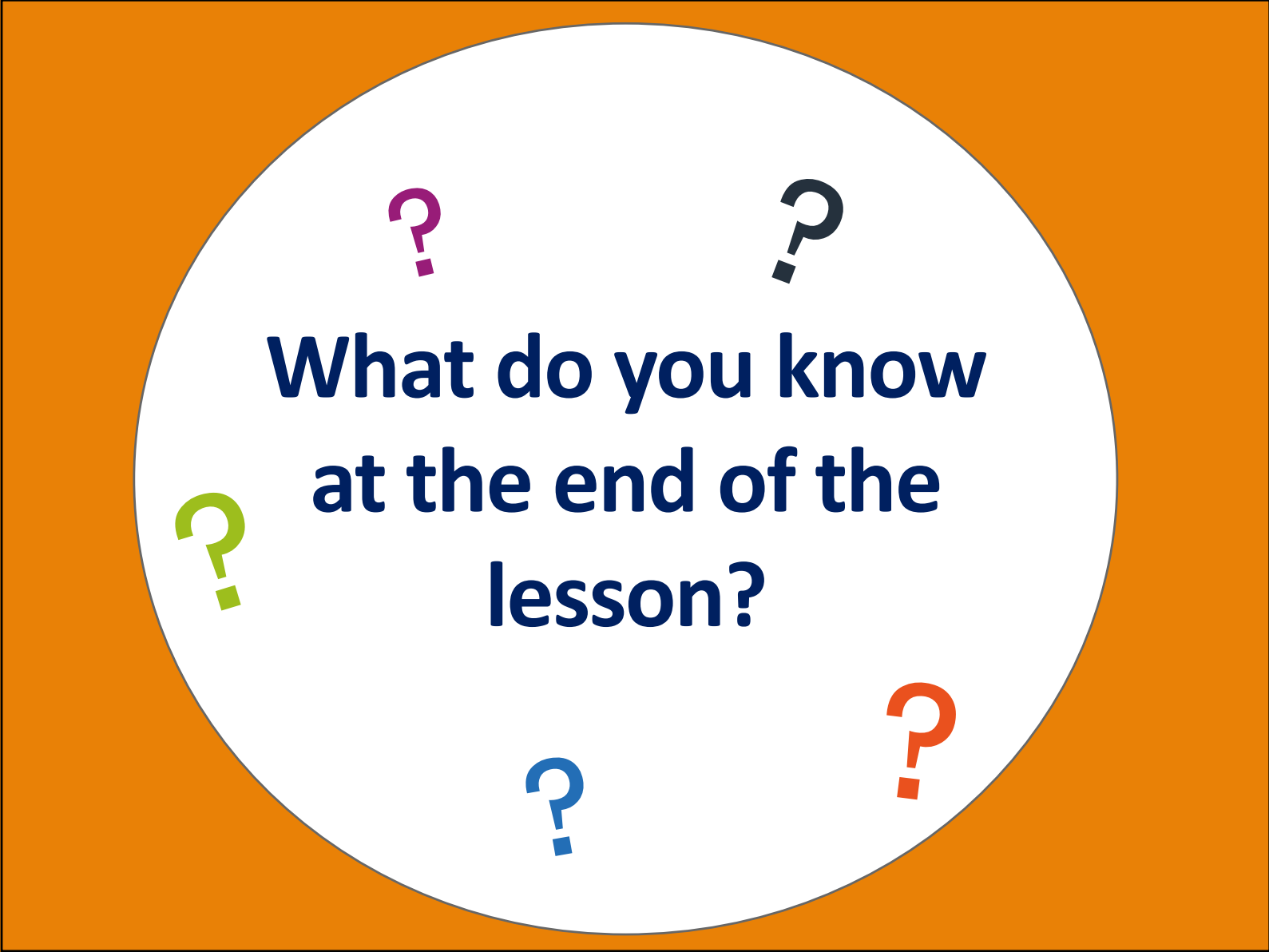
Sentencing

Josh could be charged with assault including murder (if Mikhail dies). This will result in a referral to the Youth Justice Service for assessment and intervention and will lead to a high-level community order or custody.

Reporting a crime

It is everyone's responsibility to act if they know someone is carrying a knife and to not just ignore it.

- If you know someone is carrying a knife, call 999 immediately
- If you know someone who has carried a knife in the past call 101
- You can report Knife Crime anonymously through Crimestoppers' "Fearless" youth service on 0800 555 111 or www.crimestoppers-uk.org/fearless



**What do you know
at the end of the
lesson?**